

The contractor is to check and verify all building and site dimensions, levels, and sewer invert levels at connection points before work starts.

This drawing must be read with and checked against any structural or other specialist drawings provided.

The contractor is to comply in all respects with the current Building Regulations whether or not specifically stated on these drawings.

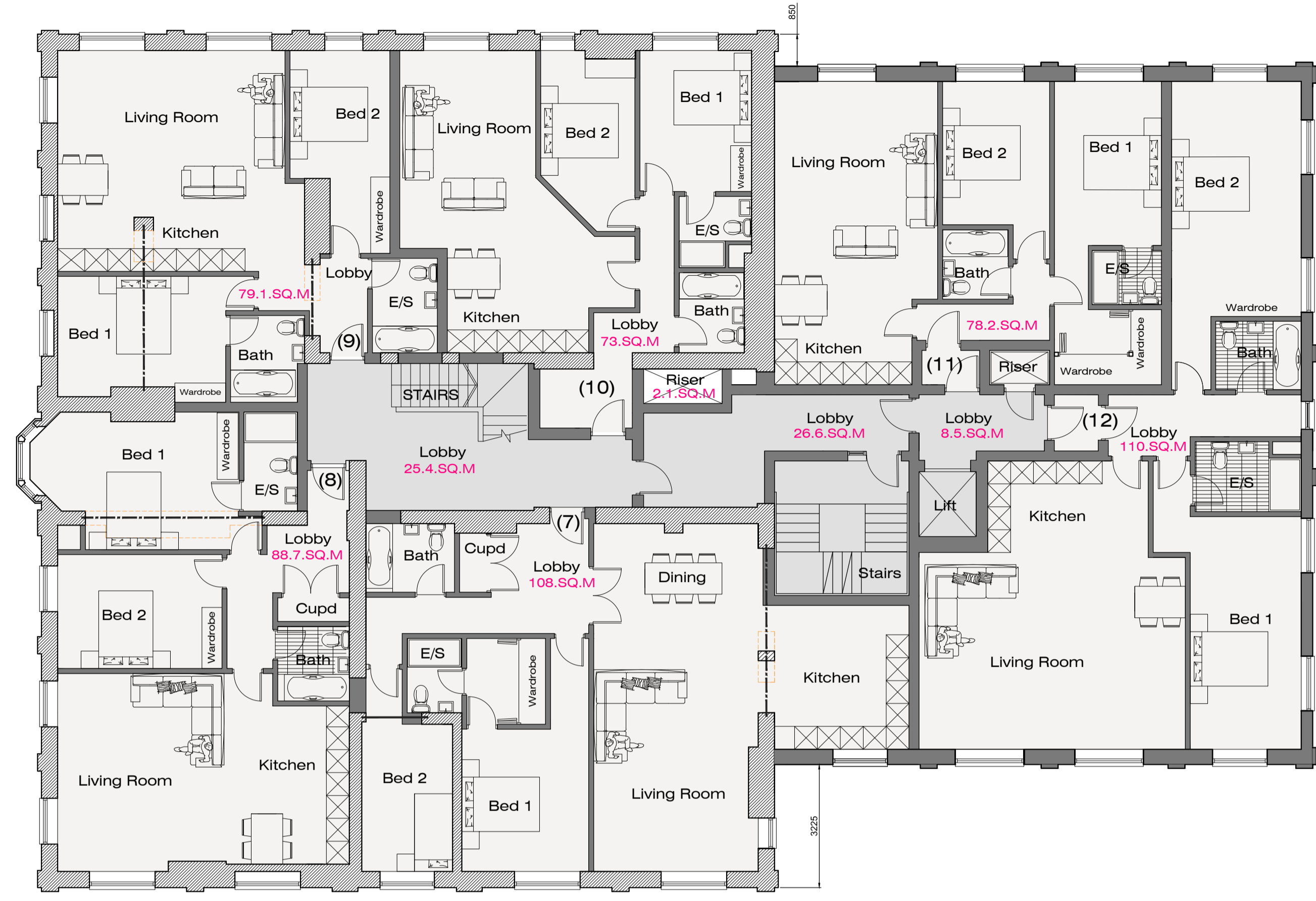
This drawing is not intended to show details of foundations or ground conditions. Each area of ground relied upon to support the structure depicted must be investigated by the contractor and suitable methods of foundations provided.

This drawing is to be read in conjunction with all other standard STONE ME! DESIGN LTD specifications and documentation.

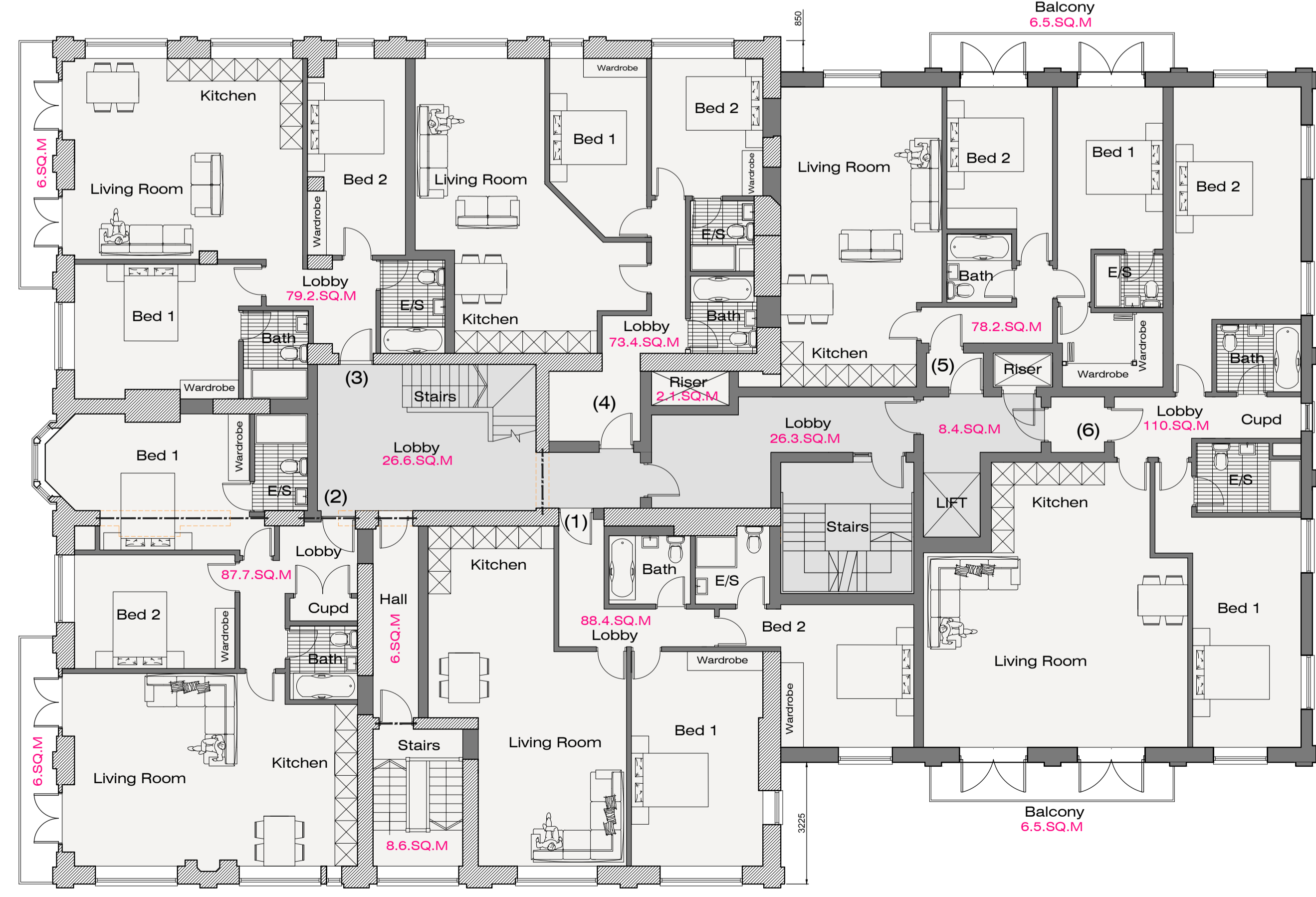
This drawing remains the copyright of STONE ME! DESIGN LTD and cannot be reproduced without prior permission.

STONE ME! DESIGN LTD reserves the right to withdraw any drawings from any applications or third parties should disputes arise between the client and STONE ME! DESIGN LTD

- FLAT 1 : 88.4 SQ.M + 1 PARKING SPACE
- FLAT 2 : 87.7 SQ.M + 1 PARKING SPACE
- FLAT 3 : 79.2 SQ.M + 1 PARKING SPACE
- FLAT 4 : 73.4 SQ.M + 1 PARKING SPACE
- FLAT 5 : 78.2 SQ.M + 1 PARKING SPACE
- FLAT 6 : 110 SQ.M + 1 PARKING SPACE
- FLAT 7 : 108 SQ.M + 1 PARKING SPACE
- FLAT 8 : 88.7 SQ.M + 1 PARKING SPACE
- FLAT 9 : 79.1 SQ.M + 1 PARKING SPACE
- FLAT 10 : 73 SQ.M + 1 PARKING SPACE
- FLAT 11 : 78.2 SQ.M + 1 PARKING SPACE
- FLAT 12 : 110 SQ.M + 1 PARKING SPACE
- FLAT 13 : 92.5 SQ.M + 1 PARKING SPACE
- FLAT 14 : 82.8 SQ.M + 1 PARKING SPACE
- FLAT 15 : 92 SQ.M + 1 PARKING SPACE
- FLAT 16 : 75 SQ.M + 1 PARKING SPACE
- FLAT 17 : 60.3 SQ.M + 1 PARKING SPACE
- FLAT 18 : 71.4 SQ.M + 1 PARKING SPACE
- FLAT 19 : 162 SQ.M + 1 PARKING SPACE + 138 SQ.M TERRACE SPACE



PROPOSED SECOND FLOOR PLAN
Scale 1:100



PROPOSED FIRST FLOOR PLAN
Scale 1:100



| | | |
|------|----------|---------------------|
| F | 16.05.17 | PLANNING SUBMISSION |
| Rev. | Date: | Amendment: |



The Studio, 8 The Caniers, Thundersley, Benfleet, Essex. SS7 3DJ
Tel: 01702 555411 / Fax: 01702 555411
E: info@stone.me W: www.stoneme.com

Client: MR M NORCROSS

Project: THE GRAND HOTEL
LEIGH-ON-SEA
ESSEX

Drawing: PROPOSED FIRST FLOOR
PROPOSED SECOND FLOOR

Date: 16.11.2015 Scale: 1:100 @ A1

Project No.: Drawing No.: